



**Borgo[®]
de'Pazzi**
F I R E N Z E
www.borgodepazzi.com



"Chiara" Shawl

by MariaGrazia Berno

A light shawl, suitable for all seasons.

Worked from bottom up, slightly semi-circular shape. Embellished by Swarovski pearls inserted on the work ends.

<http://www.ravelry.com/people/maribey>



MariaGrazia Berno
Uncinetto Tunisino, questo sconosciuto

DIFFICULTY: intermediate

DIMENSIONS: cm.170 x cm.50 approx

YARN: Lace - 100% merino extrafine - 100 gr/750 mt - Borgo de'Pazzi Firenze

MATERIALS:

Circular Knitting Needles n.3.25 cm - cm.80 cable

- 150 grams "Lace" by Borgo de'Pazzi

- 12 teardrops beads Swarovski (plus 2)

- Spiral rings, short nails

GAUGE:knit the chart ones (105 sts x 46 rows): 33 cm width - 15 di altcm Ht: after washing and steam blocking.

STITCHES:

- Stockinette Stitch



- Stockinette stitch reverse

Central Decreasing : . : pass 2 sts kntiwise, K1, pass the 2 sts together

Su Youtube: <https://www.youtube.com/watch?v=vjWrsQivZz0>

TECHNICS: ELASTIC CAST OFF

Youtube <https://www.youtube.com/watch?v=SbzeEg6XMwM>












ABBREVIATIONS:

F: front side of work

B: back side of work

[Refer to SYMBOLS below](#)

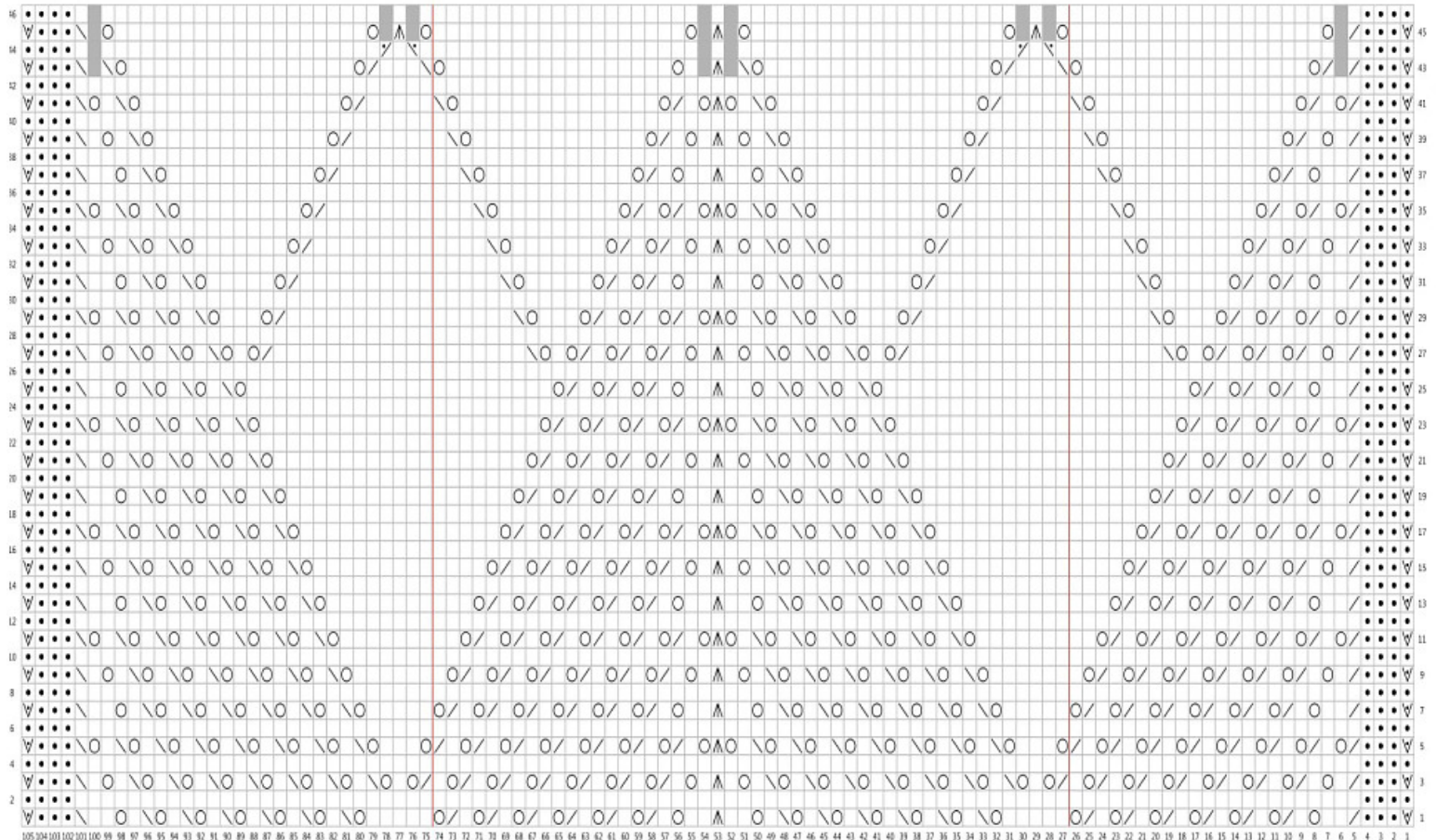
Key

 RS: knit WS: purl	 RS: slip purlwise with yarn in front
 RS: k2tog	 grey no stitch
 yo	 WS: p2tog
 WS: p2tog tbl	 RS: sl2, k1, p2sso
 RS: ssk	 RS: purl WS: knit
 repeat	

ISTRUCTIONS:

Cast on 537 sts: knit 46 rows on Chart 1 as follows:
knit first 26 sts, repeat 10 times the following 48 sts, finish with last 31 sts.
At the end of Chart 1 you have decreased 44 sts (TOT 493 sts on needle).

CHART 1

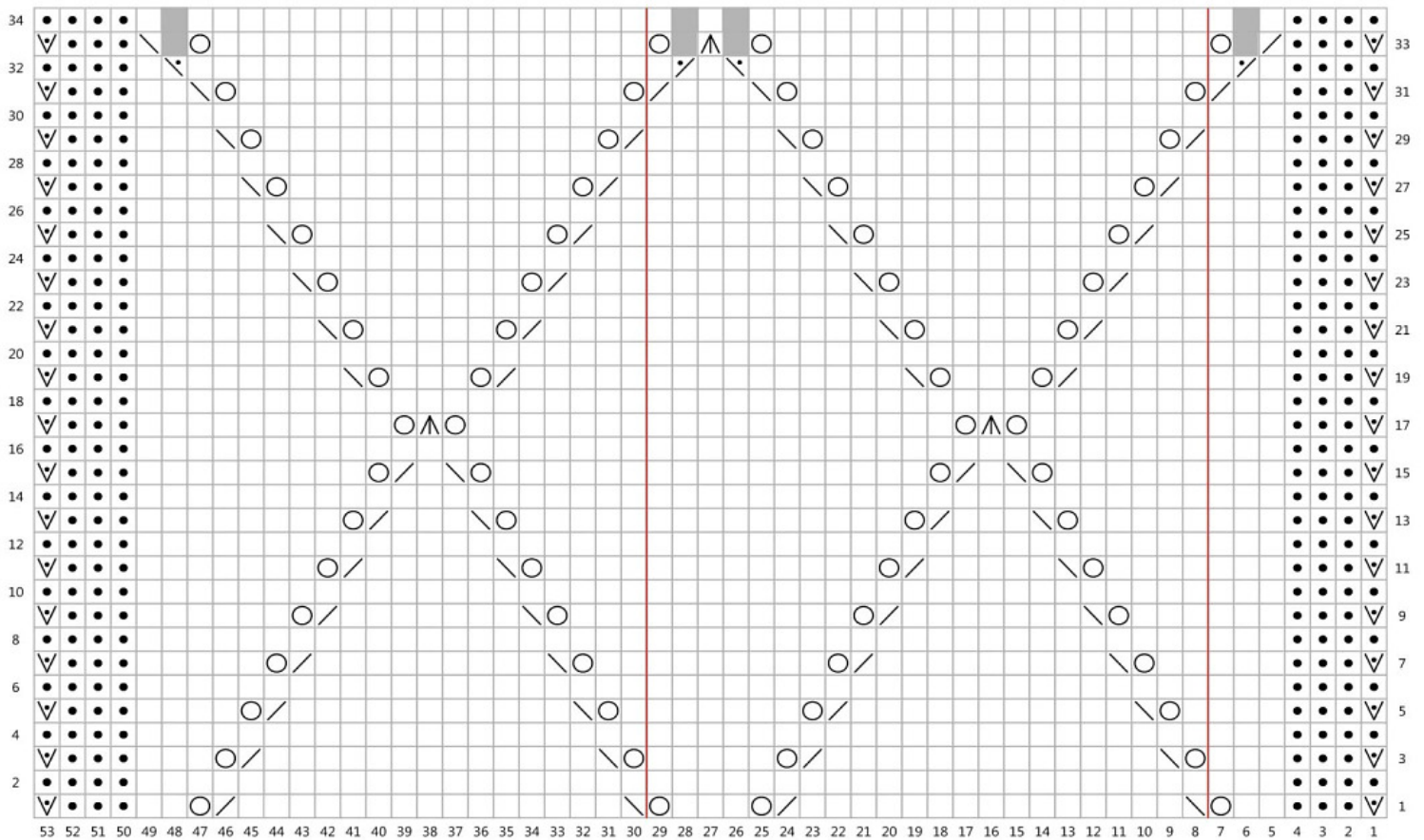


Proceed knitting 493 sts following Chart 2 (34 rows) :

Knit first 7 sts, repeat 24 times the following 22 sts, finish with last 24 sts.

At the end of Chart 2 you have decreased 44 sts (TOT449 sts on needle).

CHART 2

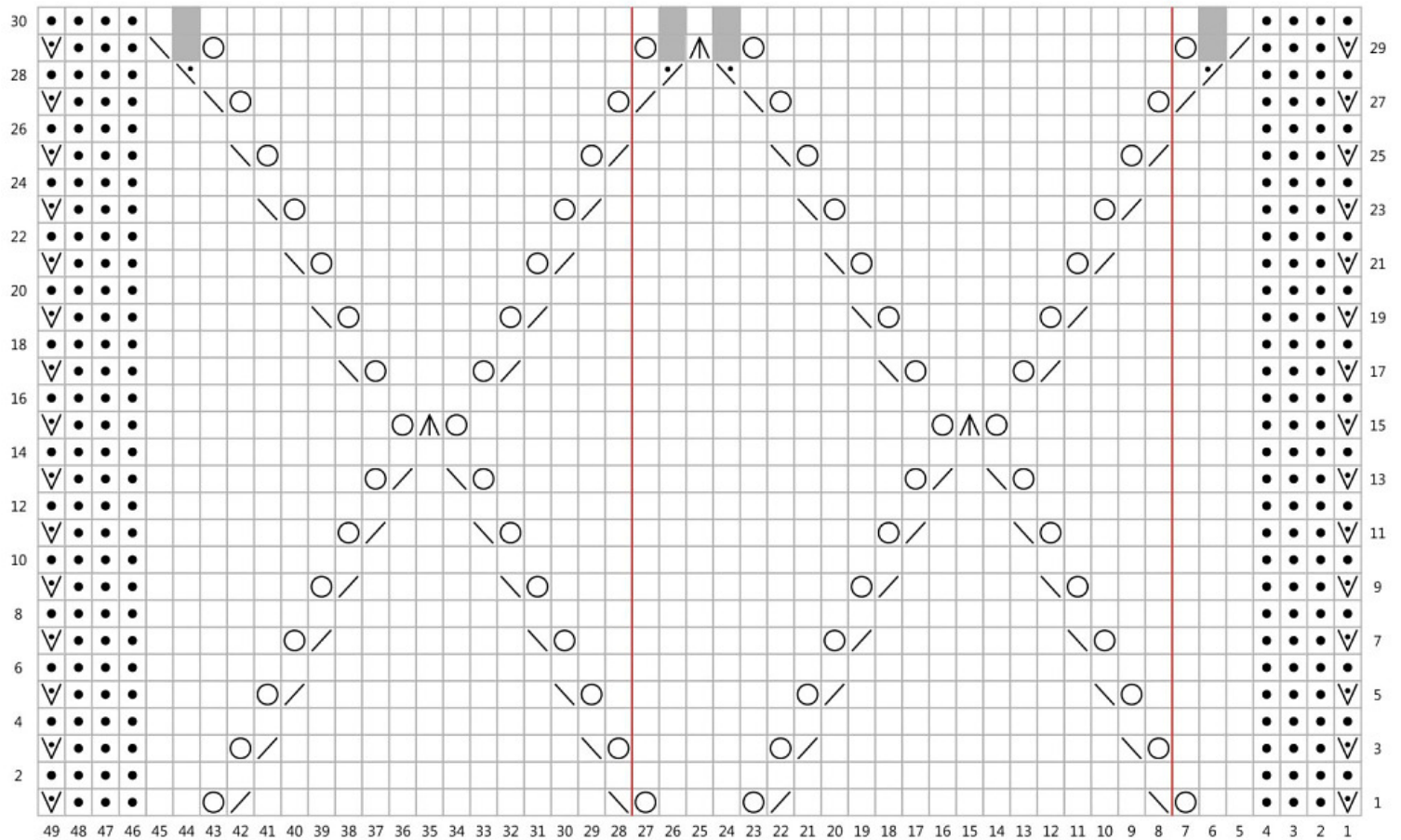


Proceed knitting 449 sts following Chart 3 (30 rows) :

Knit first 7 sts, repeat 24 times the following 22 sts, finish with last 22 sts.

At the end of Chart 3 you have decreased 44 sts (TOT405 sts on needle).

CHART 3

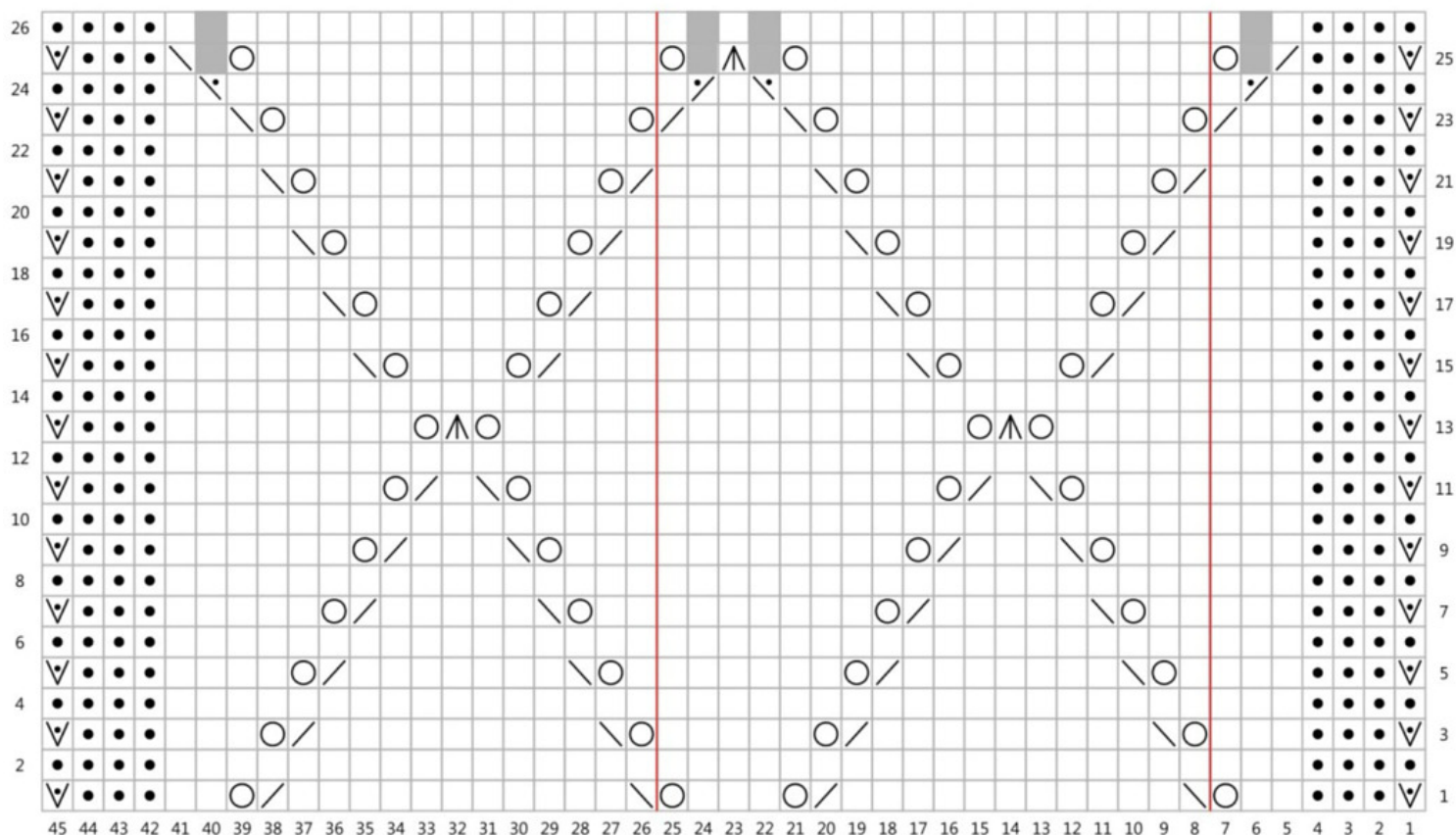


Proceed knitting 405 sts following Chart 4 (26 rows) :

Knit first 7 sts, repeat 24 times the following 22 sts, finish with last 20 sts.

At the end of Chart 4 you have decreased 44 sts (TOT361 sts on needle).

CHART 4



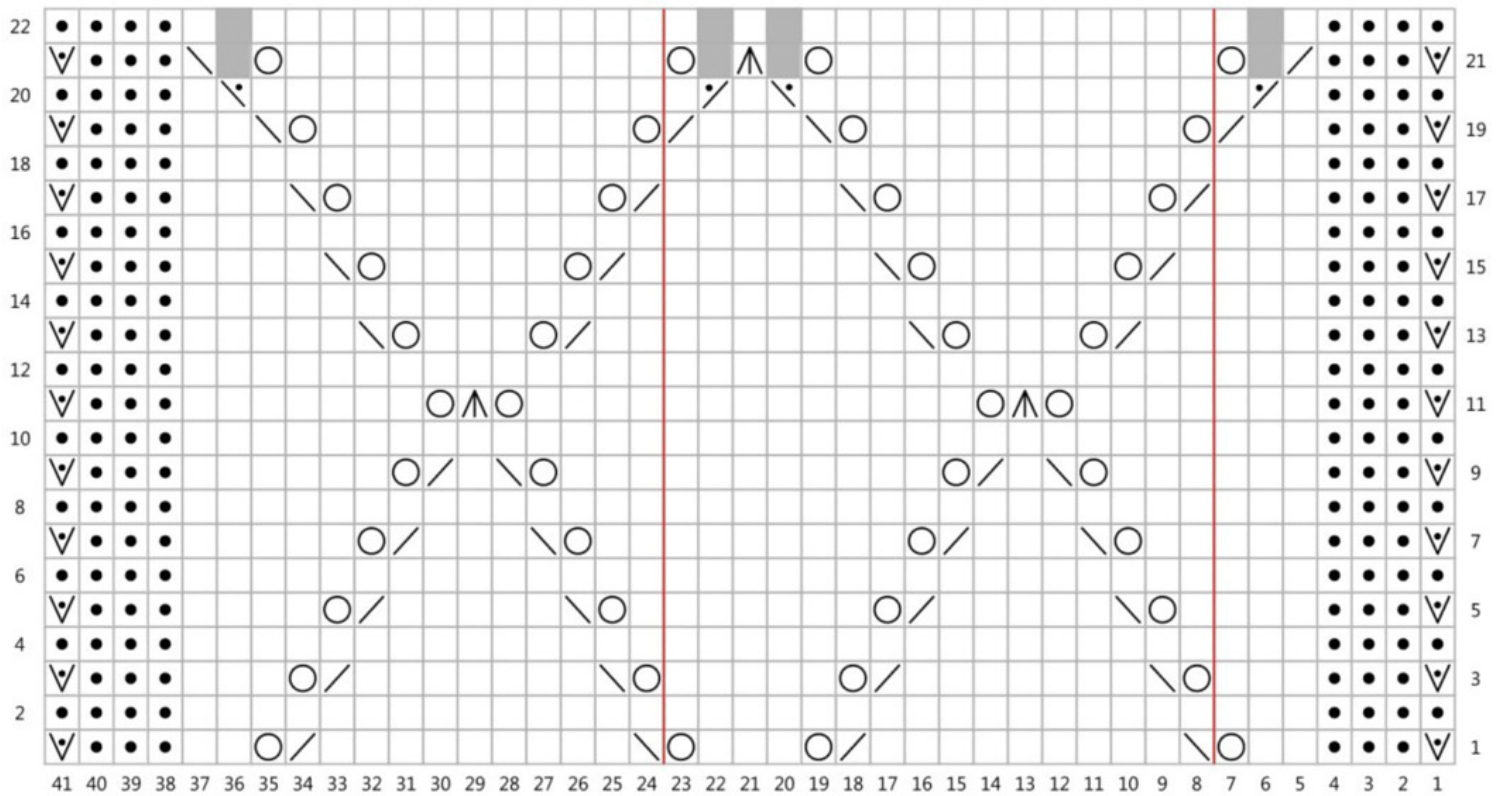
Proceed knitting 361 sts following Chart 5 (22 rows) :

Knit first 7 sts, repeat 24 times the following 22 sts, finish with last 2 sts.

At the end of Chart 5 you have decreased 44 sts (TOT 317 sts on needle).

Purl one row on Front side of work, Knit 1 row on Back of work, then cast off all sts on Front side of work, using elastic cast off.

CHART 5



FINISHING AND BLOCKING:

Weave in all ends.

Wet and block flat, pulling well all ends/points and fixing them with stainless pins.

Once dried, steam slightly.

Put the nail in the pearl and form a ring: insert spiral rings directly into the central stitch of each point and into the pearl's ring.