



Borgo[®]
de'Pazzi
F I R E N Z E
www.borgodepazzi.com



Summer is coming

A Pi-Shawl interpreted by Adriana Monoscalco



Suggested Materials: (used for shawl in the photo):

- 3 skeins, Natural/Undyed [Pelagia Borgo dei Pazzi Firenze®](#) (I used gr. 125).
- Needles: Set of 5 double pointed needles (dpn's), mm. 3 circular needles mm. 4,5 .
- Stitch markers to mark off the beginning of the round and repeats of the pattern.
- Cotton for lifelines.
- Small tapestry needle for weaving in ends.

Cast on 9 stitches as per Emily Ocker's circular cast on (<https://www.youtube.com/watch?v=4Vkpqdea-6o>)

Row 1: knit

Row 2: double the stitches (Knit one, yarn over) (18 stitches)

Row 3: knit

Row 4: knit

Row 5: knit

Row 6: knit

Row 7: double the stitches(Knit one, yarn over) (36 stitches)

Knit 12 rows

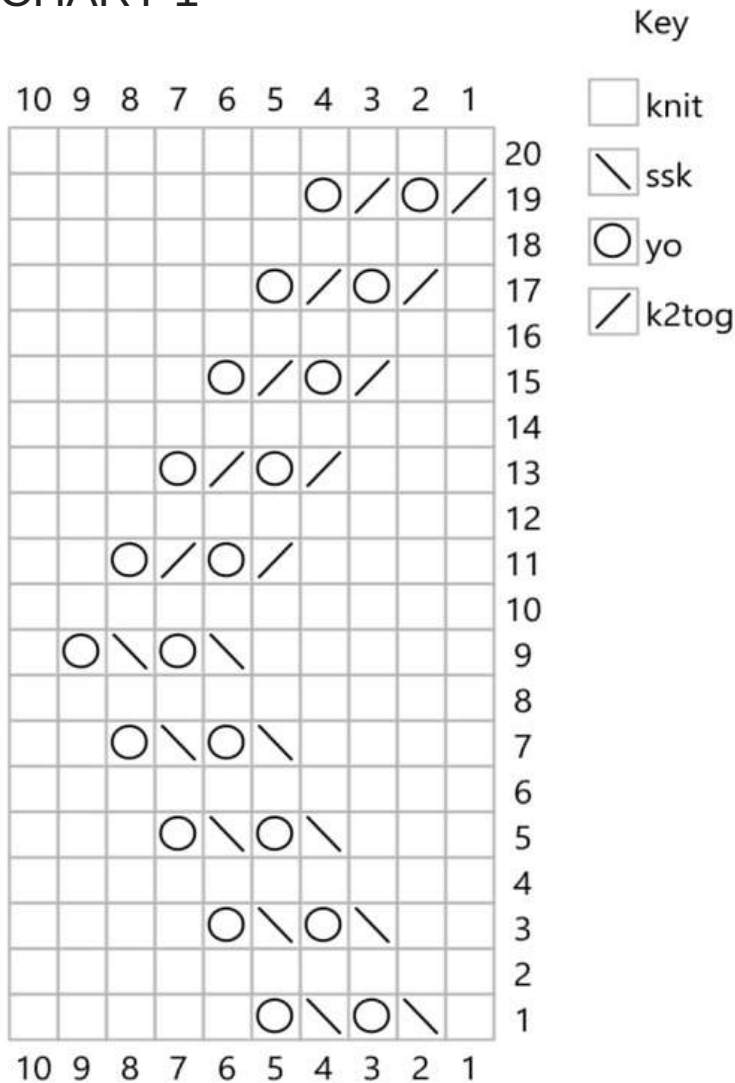
Double the stitches (Knit one, yarn over) (72 stitches)

knit 4 rows

Adjust the stitches to have 70 stitches

Knit Chart n. 1 once (repeat motif 10 times)

CHART 1



Key

- knit
- ssk
- yo
- k2tog

Chart n. 1

Round 1: K, (ssk, yo) x 2, k5. (10 sts)

Round 2 and all even-numbered rounds: Knit.

Round 3: K2, (ssk, yo) x 2, k4.

Round 5: K3, (ssk, yo) x 2, k3.

Round 7: K4, (ssk, yo) x 2, k2.

Round 9: K5, (ssk, yo) x 2, k.

Round 11: K4, (k2tog, yo) x 2, k2.

Round 13: K3, (k2tog, yo) x 2, k3.

Round 15: K2, (k2tog, yo) x 2, k4.

Round 17: K, (k2tog, yo) x 2, k5.

Round 19: (K2tog, yo) x 2, k6.

- Knit 4 rows
- Double the stitches (Knit one, yarn over) (140 stitches)
- Knit 4 rows and adjust so that you have 144 stitches
- Knit chart n. 2 twice (repeat motif 24 times)

CHART 2

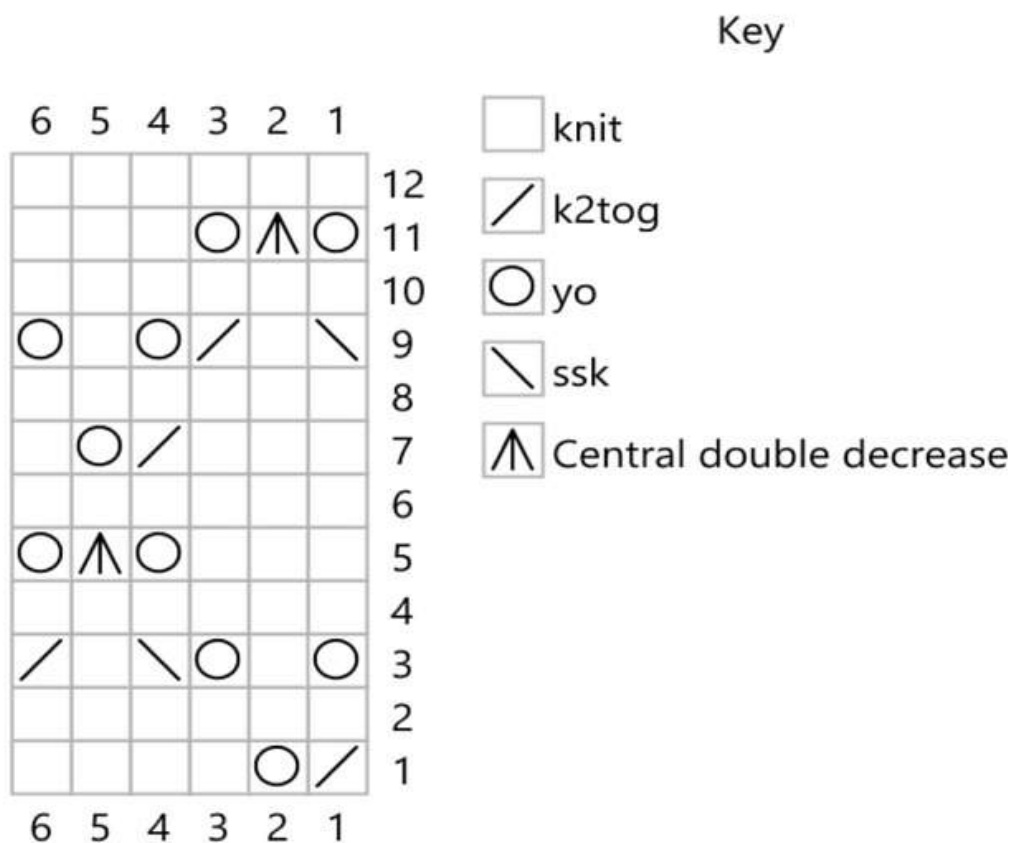


Chart n. 2

Round 1: K2tog, yo, k4. (6 sts)

Round 2 and all even-numbered rounds: Knit.

Round 3: Yo, k, yo, ssk, k, k2tog.

Round 5: K3, yo, cdd, yo.

Round 7: K3, k2tog, yo, k.

Round 9: Ssk, k, k2tog, yo, k, yo.

Round 11: Yo, cdd, yo, k3.

- Knit 4 rows
- Double the stitches (Knit one, yarn over) (288 stitches)
- Knit 4 rows
- knit chart n 3 twice (repeat motif 19 times)

CHART 3

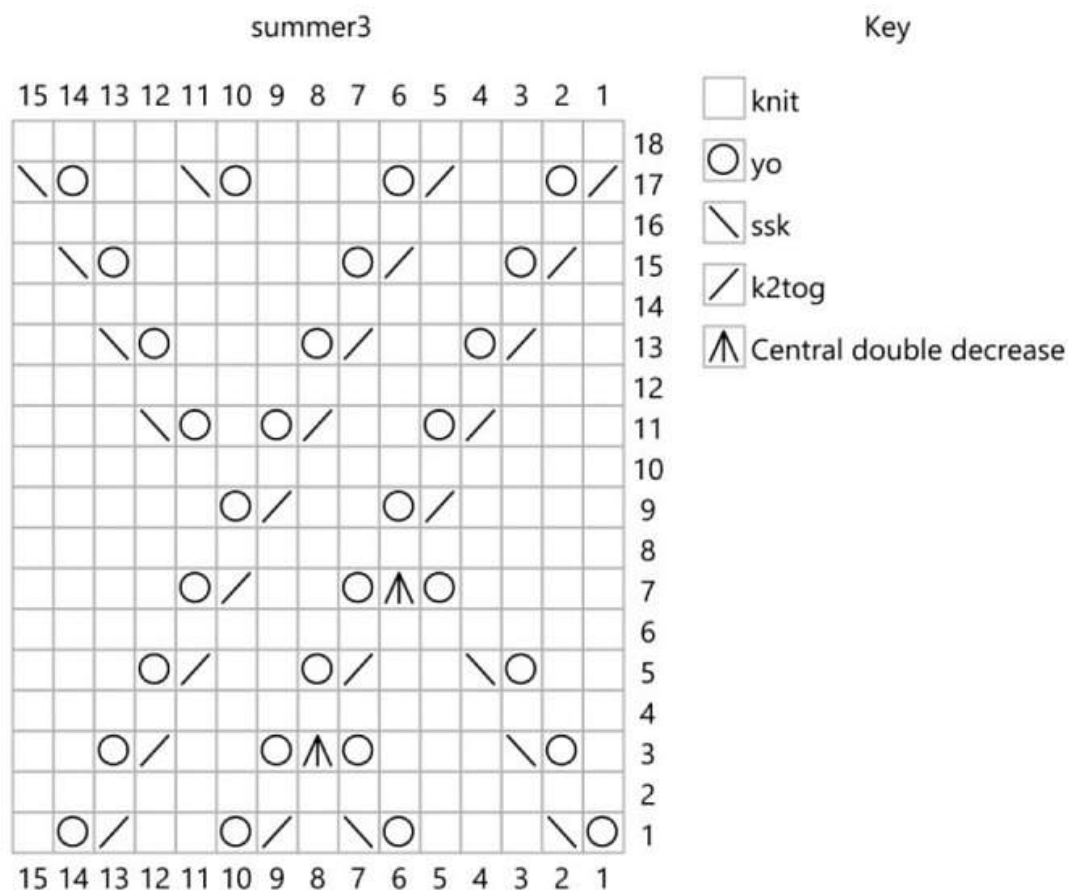


Chart3

Round 1: Yo, ssk, k3, yo, ssk, k, k2tog, yo, k2, k2tog, yo, k. (15 sts)

Round 2 and all even-numbered rounds: Knit.

Round 3: K, yo, ssk, k3, yo, cdd, yo, k2, k2tog, yo, k2.

Round 5: K2, yo, ssk, (k2, k2tog, yo) x 2, k3.

Round 7: K4, yo, cdd, yo, k2, k2tog, yo, k4.

Round 9: K4, k2tog, yo, k2, k2tog, yo, k5.

Round 11: K3, k2tog, yo, k2, k2tog, yo, k, yo, ssk, k3.

Round 13: (K2, k2tog, yo) x 2, k3, yo, ssk, k2.

Round 15: K, k2tog, yo, k2, k2tog, yo, k5, yo, ssk, k.

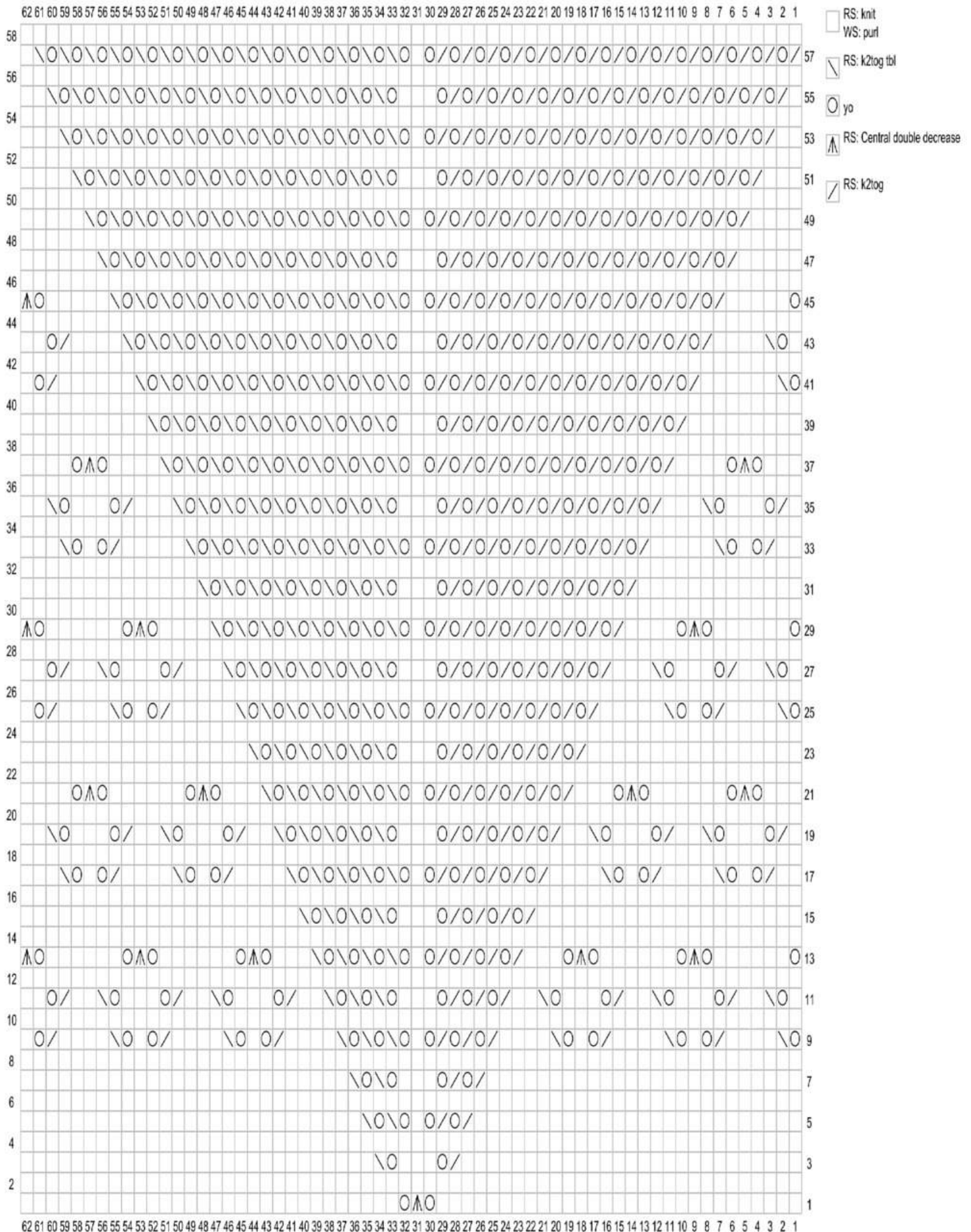
Round 17: K2tog, yo, k2, k2tog, yo, k3, yo, ssk, k2, yo, ssk.

- Double the sts (K1-YO) - tot 576 sts
- Knit 4 rows and adjust to have 620 sts
- Knit Chart 4 (repeat motif 10 times)

CHART 4

SOLSTICE

Key



-CHART 4

Row 1 (RS): K29, yo, cdd, yo, k30. (62 sts)

Row 2 and all WS rows: Purl.

Row 3: K27, k2tog, yo, k3, yo, ssk, k28.

Row 5: K26, (k2tog, yo) x 2, k, (yo, ssk) x 2, k27.

Row 7: K25, (k2tog, yo) x 2, k3, (yo, ssk) x 2, k26.

Row 9: (Yo, ssk, k4, k2tog, yo, k) x 2, yo, ssk, k4, (k2tog, yo) x 2, k2tog, yo, k, (yo, ssk) x 2, (yo, ssk, k4, k2tog, yo, k) x 3.

Row 11: K, (yo, ssk, k2, k2tog, yo, k3) x 2, yo, ssk, k2, (k2tog, yo) x 2, k2tog, yo, k3, (yo, ssk) x 2, (yo, ssk, k2, k2tog, yo, k3) x 2, yo, ssk, k2, k2tog, yo, k2.

Row 13: (Yo, k6, yo, cdd) x 2, yo, k3, (k2tog, yo) x 4, k, (yo, ssk) x 4, k3, (yo, cdd, yo, k6) x 2, yo, cdd.

Row 15: K21, (k2tog, yo) x 4, k3, (yo, ssk) x 4, k22.

Row 17: K2, (k2tog, yo, k, yo, ssk, k4) x 2, ((k2tog, yo) x 2) x 2, k2tog, yo, k, ((yo, ssk) x 2) x 2, (yo, ssk, k4, k2tog, yo, k) x 2, yo, ssk, k3.

Row 19: K, (k2tog, yo, k3, yo, ssk, k2) x 2, ((k2tog, yo) x 2) x 2, k2tog, yo, k3, ((yo, ssk) x 2) x 2, (yo, ssk, k2, k2tog, yo, k3) x 2, yo, ssk, k2.

Row 21: K3, yo, cdd, yo, k6, yo, cdd, yo, k3, (k2tog, yo) x 6, k, (yo, ssk) x 6, k3, yo, cdd, yo, k6, yo, cdd, yo, k4.

Row 23: K17, (k2tog, yo) x 6, k3, (yo, ssk) x 6, k18.

Row 25: Yo, ssk, k4, k2tog, yo, k, yo, ssk, k5, (k2tog, yo) x 7, k, (yo, ssk) x 7, k5, k2tog, yo, k, yo, ssk, k4, k2tog, yo, k.

Row 27: K, yo, ssk, k2, k2tog, yo, k3, yo, ssk, k3, (k2tog, yo) x 7, k3, (yo, ssk) x 7, k3, k2tog, yo, k3, yo, ssk, k2, k2tog, yo, k2.

Row 29: Yo, k6, yo, cdd, yo, k4, (k2tog, yo) x 8, k, (yo, ssk) x 8, k4, yo, cdd, yo, k6, yo, cdd.

Row 31: K13, (k2tog, yo) x 8, k3, (yo, ssk) x 8, k14.

Row 33: K2, k2tog, yo, k, yo, ssk, k5, (k2tog, yo) x 9, k, (yo, ssk) x 9, k5, k2tog, yo, k, yo, ssk, k3.

Row 35: K, k2tog, yo, k3, yo, ssk, k3, (k2tog, yo) x 9, k3, (yo, ssk) x 9, k3, k2tog, yo, k3, yo, ssk, k2.

Row 37: K3, yo, cdd, yo, k4, (k2tog, yo) x 10, k, (yo, ssk) x 10, k4, yo, cdd, yo, k4.

Row 39: K9, (k2tog, yo) x 10, k3, (yo, ssk) x 10, k10.

Row 41: Yo, ssk, k6, (k2tog, yo) x 11, k, (yo, ssk) x 11, k6, k2tog, yo, k.

Row 43: K, yo, ssk, k4, (k2tog, yo) x 11, k3, (yo, ssk) x 11, k4, k2tog, yo, k2.

Row 45: Yo, k5, (k2tog, yo) x 12, k, (yo, ssk) x 12, k5, yo, cdd.

Row 47: K5, (k2tog, yo) x 12, k3, (yo, ssk) x 12, k6.

Row 49: K4, (k2tog, yo) x 13, k, (yo, ssk) x 13, k5.

Row 51: K3, (k2tog, yo) x 13, k3, (yo, ssk) x 13, k4.

Row 53: K2, (k2tog, yo) x 14, k, (yo, ssk) x 14, k3.

Row 55: K, (k2tog, yo) x 14, k3, (yo, ssk) x 14, k2.

Row 57: (K2tog, yo) x 15, k, (yo, ssk) x 15, k.

- Knit 2 rows

BORDER

Cast on 8 additional stitches; knit back 7 stitches, knit the 8th st with the 1st st of the shawl. It seems like you will never get to the end but... I promise you will!!!

Wash the shawl and block it aggressively.

