



*Borgo de'Pazzi*<sup>®</sup>

F I R E N Z E



GODZILLA shawl

by

  
**Cryptoknitter**



# GODZILLA

This shawl was inspired by the classic Hitch-Hiker shawl. This shawl features two colors which are alternated using a short section worked in Intarsia. An i-cord border is used to accent the spiral like curve of the top border which wraps snugly around the neck and gives the shawl a touch of elegance.



**Skill:** Easy

**Dimensions:** 180 x 65 cm  
This shawl can be made smaller or larger, based on your needs.

**Materials:**

**Yarn:** **Artilea**-Borgo de' Pazzi Firenze® col. 88: 200 gr,

**Kuki** - Borgo de' Pazzi Firenze® col. 5 : 100 gr

**Knitting needles:** 6 mm/ 10 us



## Stitches and abbreviations:

**MC:** Main Color (Kuki)

**CC:** Contrasting Color (Artilea)

**K:** knit

**P:** purl

**SL:** with yarn in front, slip one stitch purlwise

**Kfbf:** double increase, Knit front, back and front.

**Twist:** pick up working color from under non-working color.



*Borgo de'Pazzi*<sup>®</sup>

F I R E N Z E

## Suggestions:

each time you come to a color change, twist yarns, as explained above, picking up the color in use from under the color not in use.



## GODZILLA shawl

### Instructions:

Cast on 7 stitch in **MC**

Row1: **MC** - K3, SL4

Row2: **MC** - K4, Kfbf, K to the end of row

Row3: **MC** - K to last 4 sts., P4

Row4: **MC** - K4, **CC** - Kfbf, K to the end of row

Row5: **CC** - K2, P to last 4 sts., SL4

Row6: **MC** - K4, **CC** - Kfbf, K to the end of row

Row7: **CC** - K2, P to last 4 sts., **MC** - K4

Row8: **MC** - K4, **CC** - Kfbf, K to the end of row

Row9: **CC** - K2, P to last 4 sts. SL4

Row10: **MC** - K4, Cross, Kfbf, K to the end of row

Row11: **MC** - K to last 4 sts., P4

Row12: **MC** - K4, Cross, Kfbf, K to the end of row

Row13: **MC** - cast-off 8 sts, K to last 4 sts, SL4

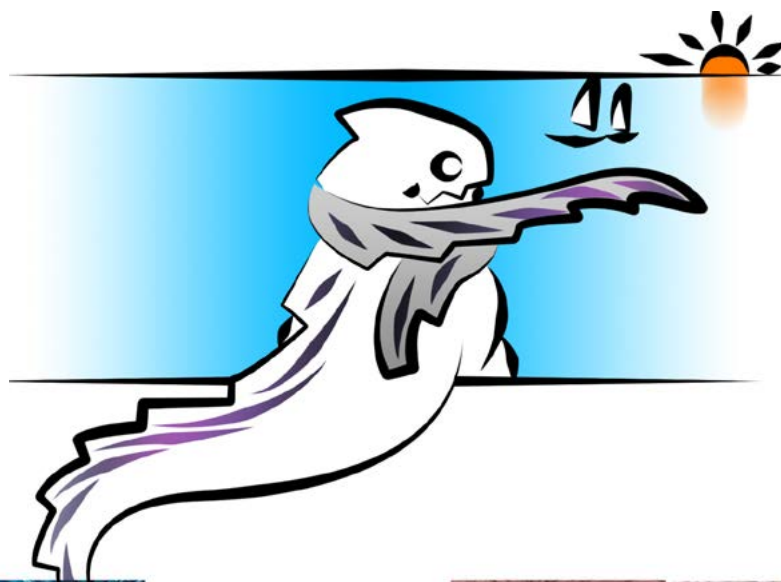
Repeat Rows 2-13 until desired length is reached, ending with Row 12.  
Bind-off as follows.

### Elastic Bind-off:

**MC:** K2 - \* return the 2 stitches to the left needle, K2tog (1 stitch has been bound off and 1 stitch remains on the right needle), k1. Repeat from \* until all stitches have been bound off.

### Finishing:

Weave-in all ends, and block.



kuki 1  
arti 84



kuki 4  
arti 80



kuki 1  
arti 83



kuki 4  
arti 89



kuki 2  
arti 85



kuki 5  
arti 88



kuki 2  
arti 88



kuki 5  
arti 85



kuki 3  
arti 87



kuki 6  
arti 81



kuki 3  
arti 86



kuki 6  
arti 82