

Borgo de'Pazzi[®]

F I R E N Z E



GODZILLA II shawl

by


Cryptoknitter



GODZILLA

This shawl was inspired by the classic Hitch-Hiker shawl. This shawl features two colors which are alternated using a short section worked in Intarsia. An i-cord border is used to accent the spiral like curve of the top border which wraps snugly around the neck and gives the shawl a touch of elegance.



Skill: Easy

Dimensions: 180 x 65 cm
This shawl can be made smaller or larger, based on your needs.

Materials:

Yarn: Artilea–Borgo de' Pazzi Firenze®
col. 81: 150 gr,
Soavia – Borgo de' Pazzi Firenze®
col. 63 : 135 gr – used doubled

Knitting needles: 7 mm



Stitches and abbreviations:

MC: Main Color (Soavia)

CC: Contrasting Color (Artilea)

K: knit

P: purl

SL: with yarn in front, slip one stitch purlwise

Kfbf: double increase, Knit front, back and front.

Twist: pick up working color from under non-working color.

Suggestions:

each time you come to a color change, twist yarns, as explained above, picking up the color in use from under the color not in use.



GODZILLA II shawl

Instructions:

Cast on 7 stitch in **MC**

Row1: **MC** – K3, SL4

Row2: **MC** – K4, Kfbf , K to the end of row

Row3: **MC** – K to last 4 sts., P4

Row4: **MC** – K4, **CC** – Kfbf, K to the end of row

Row5: **CC** – K2, P to last 4 sts., SL4

Row6: **MC** – K4, **CC** – Kfbf, K to the end of row

Row7: **CC** – K2, P to last 4 sts., **MC** – K4

Row8: **MC** – K4, **CC** – Kfbf, K to the end of row

Row9: **CC** – K2, P to last 4 sts. SL4

Row10: **MC** – K4, Cross, Kfbf, K to the end of row

Row11: **MC** – K to last 4 sts., P4

Row12: **MC** – K4, Cross, Kfbf, K to the end of row Row13: **MC** – cast-off 8 sts, K to last 4 sts, SL4

Repeat Rows 2-13 until desired length is reached, ending with Row 12.

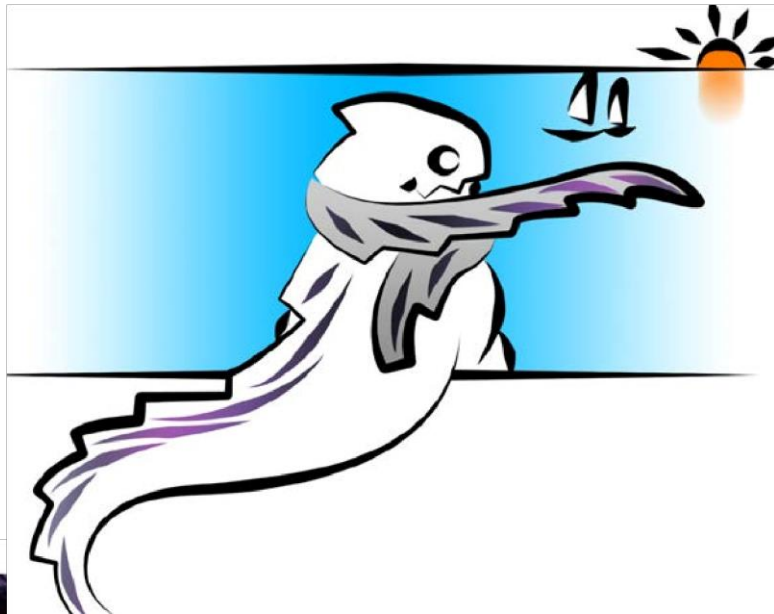
Bind-off as follows.

Elastic Bind-off:

MC: K2 - * return the 2 stitches to the left needle, K2tog (1 stitch has been bound off and 1 stitch remains on the right needle), k1. Repeat from * until all stitches have been bound off.

Finishing:

Weave-in all ends, and block.



soavia 60
arti 88



soavia 64
arti 82



soavia 60
arti 89



soavia 64
arti 86



soavia 61
arti 80



soavia 65
arti 80



soavia 61
arti 83



soavia 65
arti 87



soavia 62
arti 84



soavia 66
arti 85



soavia 63
arti 81



soavia 66
arti 89