



# Floral Haze

by MariaGrazia Berno

**Size:** M

**Gauge:** 10 cm = 15 sts knitted in "Floral Mesh" stitch, with 5,5 mm knitting needles

**Materials:**

**Yarn:** Amore 115 Borgo de' Pazzi Firenze - col. 112

**Hat:** 100 gr.

**Neck Warmer (single loop):** 100 gr.

**Neck Warmer (double loop):** 200 gr.

**Circular Knitting Needles:** 5.5 mm with 40 cm cable for the beret, 6 mm with 80 cm cable for the neck warmer.

**Row Counter, stitch markers, tapestry needle.**

**Stitches&Abbreviations:**

**Floral Mesh stitch:** Refer to chart and written instructions: repeat the pattern inside the red outlines.

**NOTES**

**Round 4:** finish 1 stich before the stitch marker (end of the round), pass 1 st from left to right needle, take out the stitch marker, pass the stitch again on left needle, place the stitch marker (beginning of new round).



**K:** knit

**YO:** yarn over

**K2Tog:** knit 2 stitches together

**SSK:** slip 2 stitches as if to knit one at a time, pass the stitches to the left needle, knit both stitches together through the back loop.

**S2-K1-PSSO:** slip 2 stitches as if to knit, knit 1, pass slipped sts over

**SPECIAL TECHNIQUES: i-cord border**

<https://www.youtube.com/watch?v=Ij8aSPnAcjs>

With another ball of yarn, cast on 3 new sts on working needle (left n.) Knit them. Pass sts again on left needle and start knitting them with the other sts of the garment you're now going to cast-off.

\*K2 - K2TogbL\* (knit 2 sts together from the back loop).

Pass 3 sts on left needle and repeat K2 - K2TogbL until all sts are closed. Sew last sts with new ones in swiss darning.

Weave-in all ends.

**Floral Mesh** stitch is made of 12 rounds.

Repeat 3 times Round1-12, and 1 time Round1-6.

Rnd 1: \*K2, SSK, K1,K2Tog, YO, K1\*.

Rnd 2 and all even rnd: K

Rnd 3: \*YO, gett, S2-K1-PSSO, YO, K3, YO, K2Tog\*.

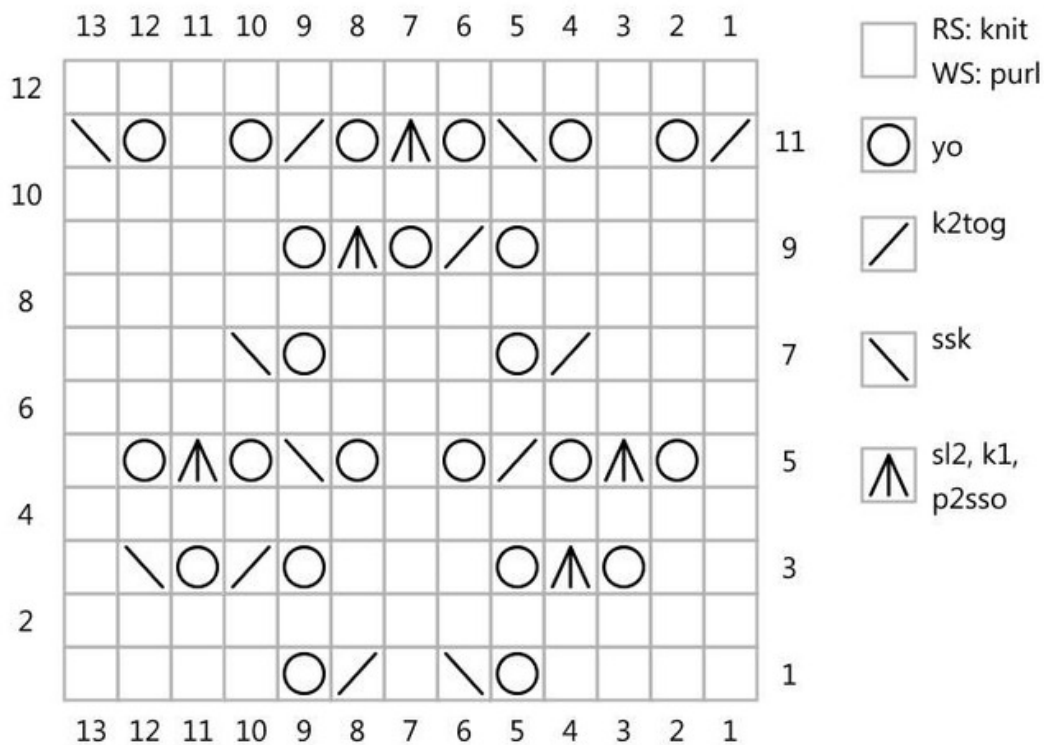
Rnd 5: finish 1 stich before the stitch marker (end of the round), pass 1 st from left to right needle, take out the stitch marker, pass the stitch again on left needle, place the stitch marker (beginning of new round).

\*S2-K1-PSSO, YO, K2Tog, YO, K1, YO, SSK, YO\*.

Rnd 7: \*K1, K2Tog, YO, K3, YO, SSK\*.

Rnd 9: \*K2, YO, K2Tog, YO, S2-K1-PSSO, YO, K1\*.

Rnd 11: \*K1, YO, SSK, YO, S2-K1-PSSO, YO, K2Tog, YO\*.



### Neck Warmer:

Single loop: circumf. cm.60 approx - ht cm.20 approx.

(Double Loop): circumf. cm.150 approx., ht cm.20 approx.

- Provisional Cast on: with waste yarn, cast on 96 (240) sts and close in the round.
- Place a stitch marker at the beginning of the round and knit 42 rounds in Floral Mesh st, with working yarn.
- Knit an i-cord border.
- Cut off the waste yarn of provisional cast on and take all stitches: knit an i-cord border.

Weave in all ends.

### Slouch Hat:

- Provisional Cast on: with waste yarn, cast on 80 sts and close in the round.
- Place a stitch marker at the beginning of the round and knit 58 rounds in Floral Mesh st, with working yarn (5 repeats).
- Round 59: follow the pattern without knittin YOs (40 sts TOT).
- Rnd 61: K2, \* S2KPSSO, K3 \* repeat from \*to\*, up to 1 st before st marker, K1.
- Rnd 63: K1, \* S2KPSSO, K1 \* repeat from \*to\*, up to st marker.
- Rnd 65: K2Tog accross. Cut off yarn, leaving 20 cm thread.

With a tapestry needle, pass the yarns through all sts, pull and fix well.

- Cut off the waste yarn of provisional cast on and pick up all stitches: knit an i-cord border. At the end of the rnd, pick up all sts of i-cord from the reverse side of the work, and knit another i-cord. Sew and weave-in the thread.

For a beret, knit 36 rnds (3 repeats): from R. 37, follow instruction written from R. 59.

Weave-in all ends. Wash and block.